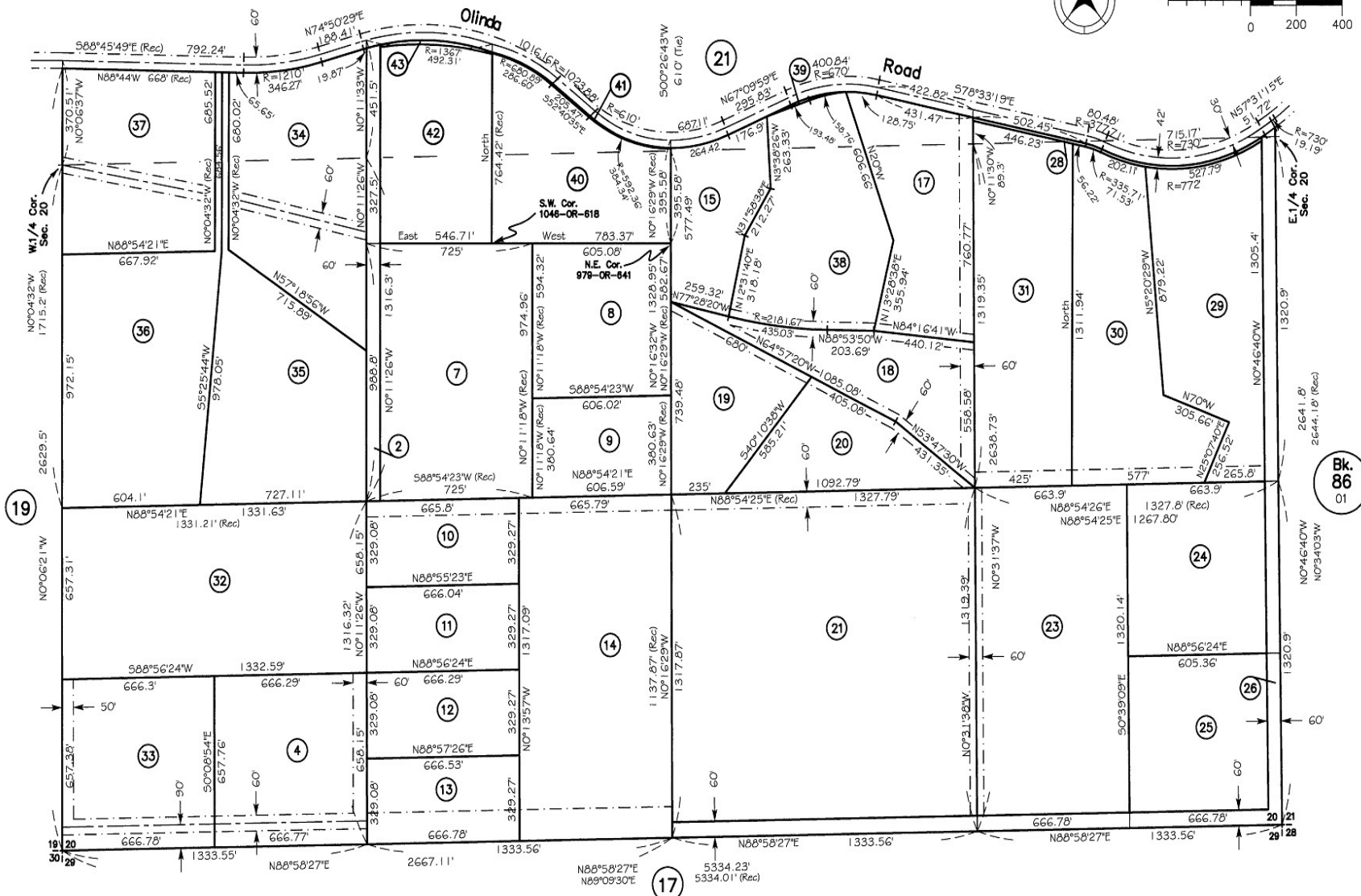
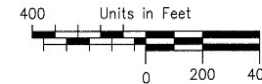


S1/2, & Por. N1/2, Sec. 20, T30N, R4W

207-200



P.M.4-52,4-136,16-154,18-135,36-33,
L.S.6-2,32-7,37-76,40-4,41-53,45-138,56-110,58-20,58-140,59-21,

FOR REFERENCE ONLY

This map reflects information transcribed from documents of record, interpreted and compiled by cadastral mapping specialists. The sole intent of this map is for tax assessment purposes. This is not a legal document nor are any features contained herein intended for any other purpose.

Shasta County Assessor